

FARMER FIELD SCHOOLS, ITS IMPACT ON COMMUNITY EMPOWERMENT, GENDER EQUALITY AND SOCIAL PROTECTION

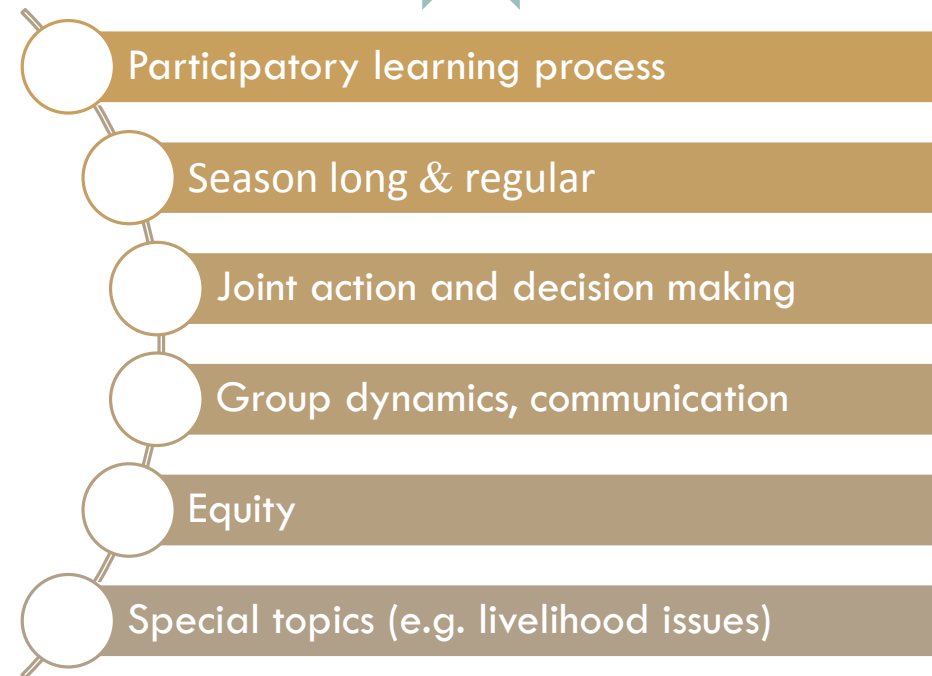
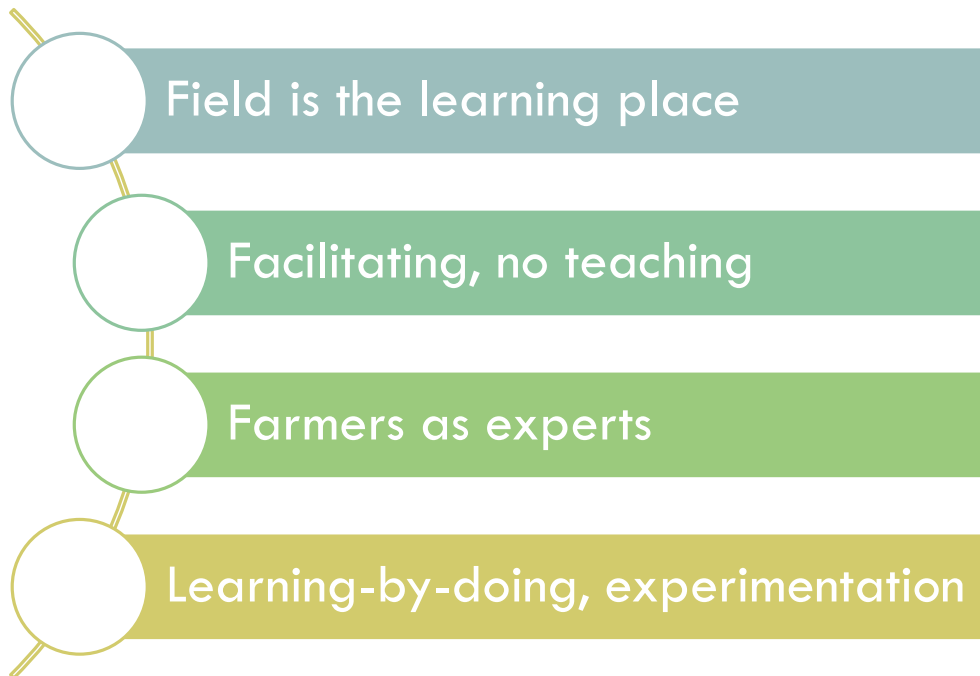
**Farmers' Experience from
Jordan and Tunisia**

Evaluation of the Role of Farmer Field School
(FFS) for Anchoring Sustainable Integrated
Pest Management (IPM) by Small Farm
Holders in NENA Region
Tunisia, 26-28/10/2015

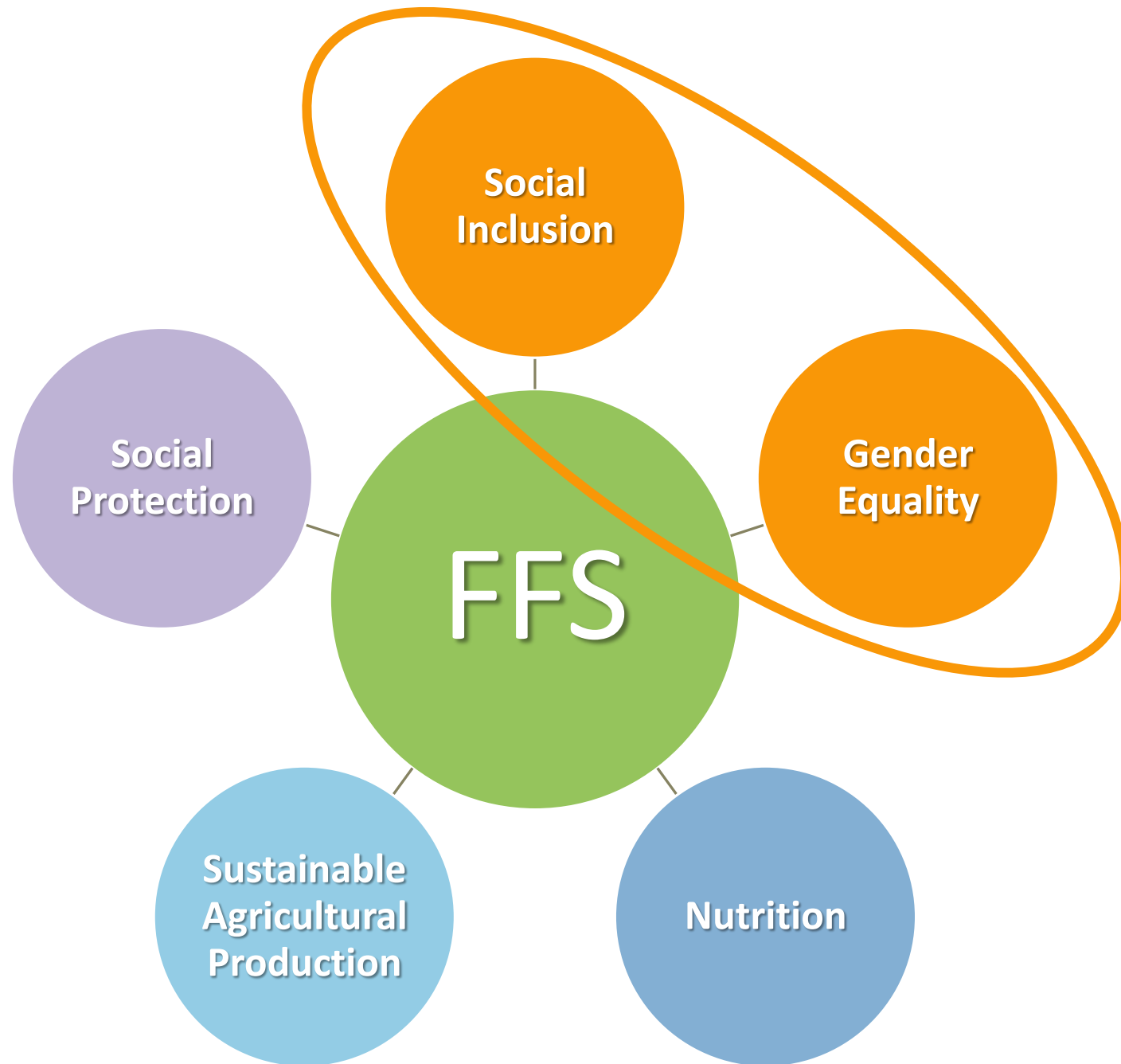
Lucie Chocholata, FAO - AGP

KEY CHARACTERISTICS OF FFS

Community
empowerment,
strengthening
of relations,
mutual trust



KEY ELEMENTS





1 - SOCIAL INCLUSION

- GENDER EQUALITY
- WOMEN'S EMPOWERMENT
- VULNERABLE GROUPS



WOMEN'S EMPOWERMENT

- Knowledge, experience
- Self-confidence
- Recognition from family and community
- Sharing



GENDER EQUALITY

- Participation
- Experience of working in team (women and men together)
- Changing roles (e.g. women facilitators)
- Communication as a way for understanding the other's experience.
- Shared responsibilities and decision-making
- From FFS group dynamics to in-house dynamics



VULNERABLE GROUPS

- Social vulnerability assessment (age, ethnicity, poverty etc.)
- Local context
- FFS inclusiveness
- Strategies for involving VGs



2 - NUTRITION

- Nutrition-related decision-making
- Diet diversity/improved diets



3 - COMMUNITY EMPOWERMENT

SOCIAL PROTECTION

- Collaboration, helping each other
- Mutual trust, sharing
- Joint action (beyond the agricultural activity)
- Own mechanisms and strategies for coping/overcoming difficulties
- Safety nets
- Formal and informal institutions
- Community ownership



COMMUNITY EMPOWERMENT

- Listening, respect, discussion, joint decision-making



COMMUNITY EMPOWERMENT

- Sharing (information, knowledge, joint action)



4 - SUSTAINABLE AGRICULTURAL PRODUCTION

- Knowledge-based and joint decision-making
- Information sharing
- Agro-ecosystem analysis
- Local heritage and environmental preservation
- Sustainable natural resources management
- IPM
- Consumers sensibilisation

MAIN FOCUS OF THE SCOPING EXERCISE



Good Practice Examples

Main Questions/Challenges/Constraints

Possible Next Steps



CHEDLIA

AN AMAZING STORY OF AN AMAZING LADY



CHEDLIA BECAME AN INSPIRATION FOR OTHER
WOMEN IN THE AREA, BECAUSE OF HER
KNOWLEDGE AND COURAGE.



**FFS PLAY A KEY ROLE IN EMPOWERING
INDIVIDUALS AND COMMUNITIES**



HASAN

THE WAY OF INDEPENDENCE AND RECOGNITION



WE LEARNT HOW TO LISTEN
THE OTHER PERSON



Knowledge, experience and self-confidence increased

Community empowerment, mutual trust, joint problem solving

Improved communication in the community and in the family

Sustainable agricultural production, IPM

“PEOPLE TRUST ME A LOT. THROUGH FFS I BECAME RECOGNIZED BY MY COMMUNITY. I OFTEN COMMUNICATE WITH AUTHORITIES. THIS ALLOWS ME TO TRANSFER THE MESSAGE FROM PEOPLE, FARMERS TO THE MINISTRIES. I ASKED FOR MORE FFS IN OUR AREA. I SAID, THIS IS WHAT WE NEED HERE.”

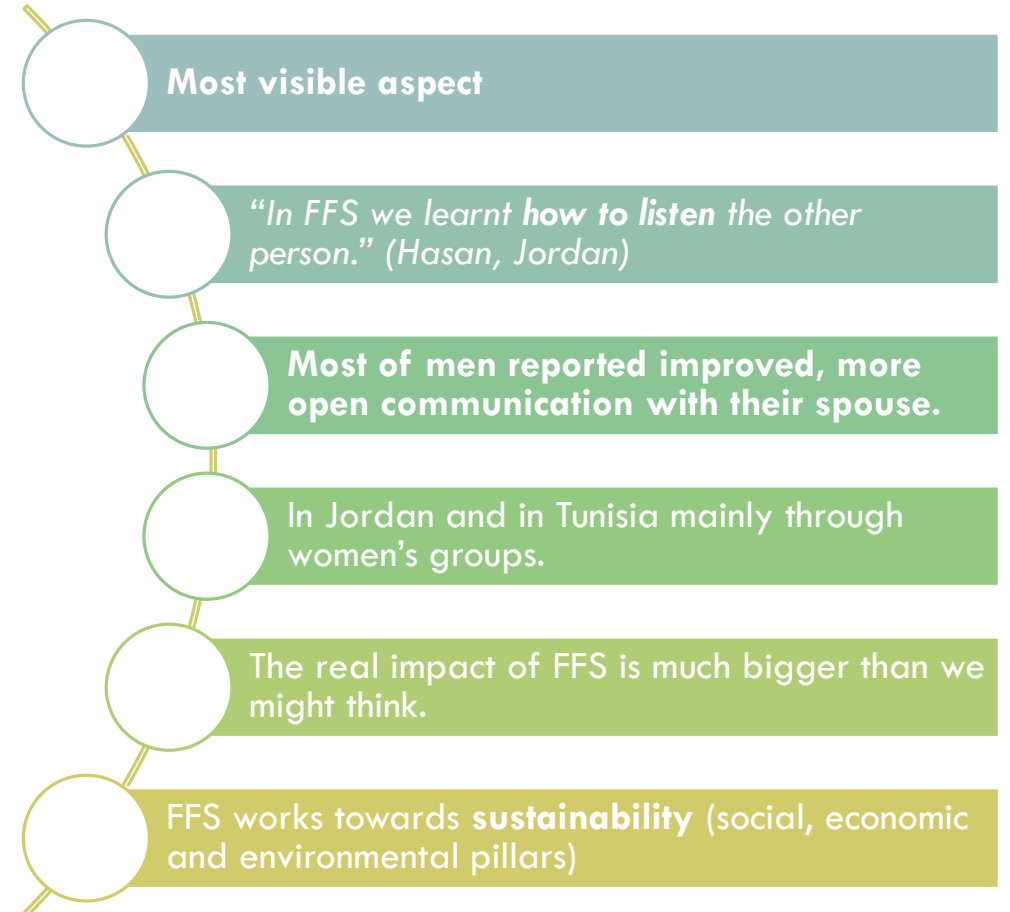
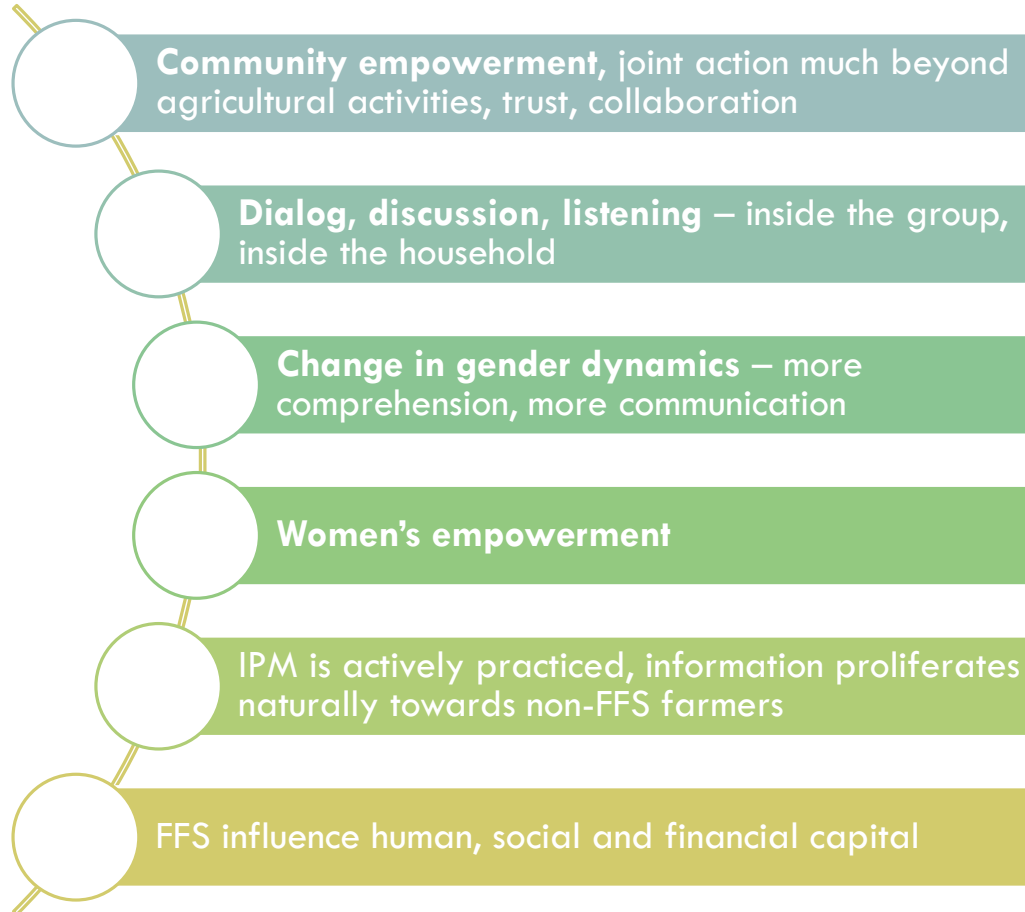
HASAN TODAY...





FFS INFLUENCE HUMAN, SOCIAL AND
FINANCIAL CAPITAL

MAIN FINDINGS





FACILITATORS — CRUCIAL FOR SUCCESS

- Communicator
- Not only technical skills
- Mission
- Attention paid to disadvantaged people
- Capacity for work with gender, women's empowerment and social vulnerability concepts

THANK YOU – MERCI – شكرا

For more information:

Ms Lucie Chocholata - lucie.chocholata@fao.org

Ms Manuela Allara - manuela.allara@fao.org

Ms Elisabetta Tagliati - elisabetta.tagliati@fao.org

Mr Alfredo Impiglia - alfredo.impiglia@fao.org